



District 2 Code Analysis - 11/30/2021

Data extracted for Code complaint cases opened between October 1st 2018 - September 30th 2019

All Complaint Cases

Reported Complaint Type	Total	Commercial	Neighborhood	Multifamily
Land Use	749	224	481	44
Property Abatement	1,519	157	1,281	81
Structure Condition	785	307	298	180
Work Without Permit	41	6	30	5
SWS Chp 15	12	4	8	-
Total	3,106	698	2,098	310
Total Percent of Citywide Complaints	8.6%	10.1%	9.4%	4.4%

Repeat Offender, Short Term Rental, and Rooming and Boarding Home Complaint Cases

**Filtering complaint cases by complaints occurring at Repeat Offender Properties (ROP), Short Term Rentals (STR), or Rooming and Boarding Homes (RBH). Austin Code categorizes them as Operating Licenses types.*

Case Code	Total	Commercial	Neighborhood	Multifamily
Repeat Offender Properties	83	12	-	71
Short Term Rentals	189	34	155	-
Rooming and Boarding Homes	7	1	6	-
Total	279	47	161	71
Total Percent of Citywide Complaints	0.8%	0.7%	0.7%	1.0%

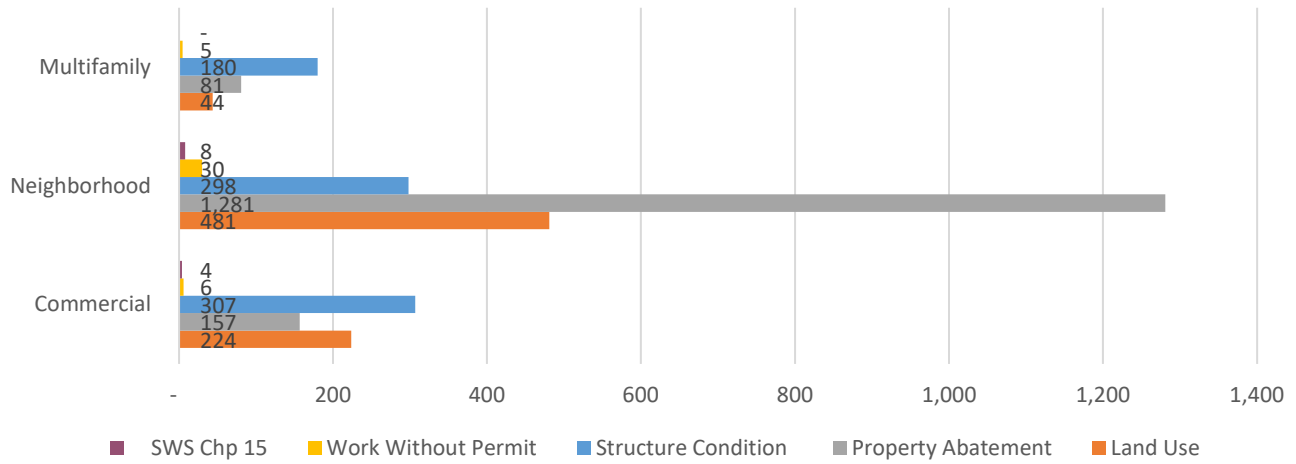
Reported Complaint Type	Total	ROP	STR	RBH
Land Use	749	7	189	6
Property Abatement	1,519	1	-	-
Structure Condition	785	75	-	-
Work Without Permit	41	-	-	1
SWS Chp 15	12	-	-	-
Total	3,106	83	189	7
Total Percent of Citywide Complaints	8.6%	2.9%	6.8%	6.0%

Council District Matrix - All Complaint Cases

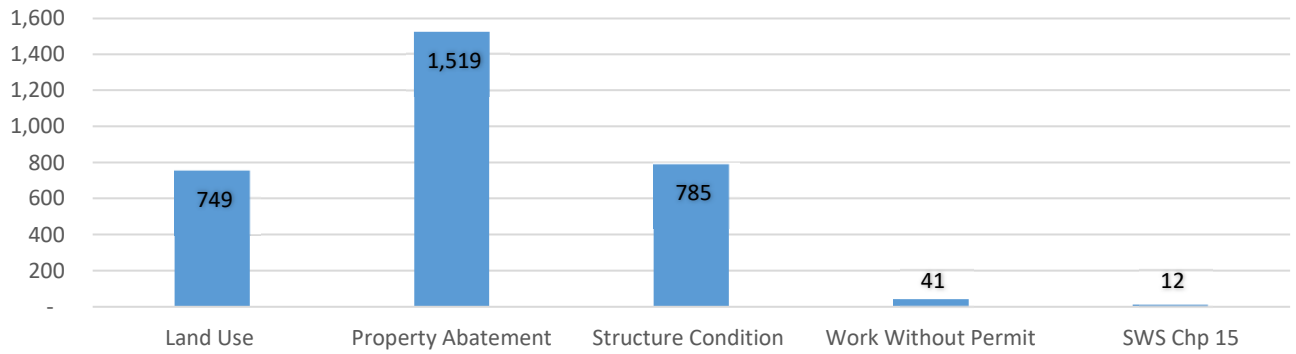
This matrix shows your Council District's percentage of total complaint cases in comparison with others.

Council District	% Total	% Commercial	% Neighborhood	% Multifamily
District 1	16.9%	11.1%	18.5%	17.7%
District 2	8.6%	10.1%	9.4%	4.4%
District 3	13.1%	18.1%	10.6%	16.2%
District 4	13.2%	9.7%	11.1%	23.4%
District 5	8.2%	4.8%	10.4%	4.3%
District 6	5.1%	4.1%	6.7%	1.1%
District 7	8.4%	11.5%	8.4%	5.4%
District 8	4.0%	1.5%	5.8%	0.9%
District 9	15.5%	24.8%	10.6%	22.2%
District 10	7.0%	4.4%	8.6%	4.4%

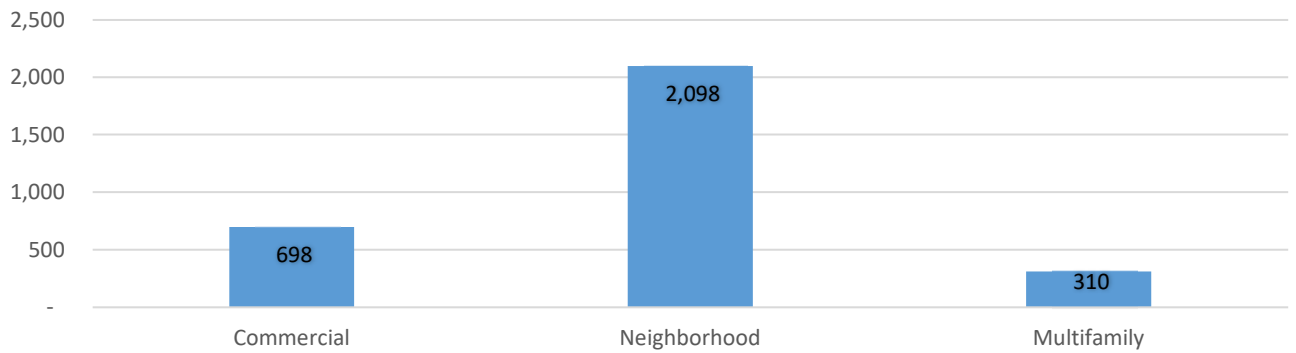
Complaint Case Types by Zoning Designation



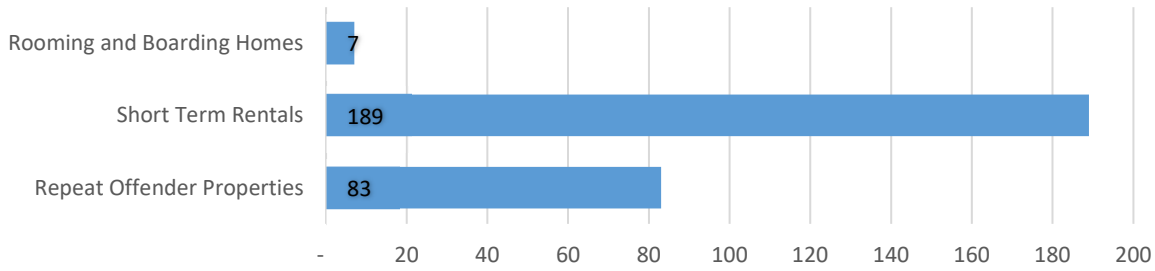
Complaint Cases by Complaint Type



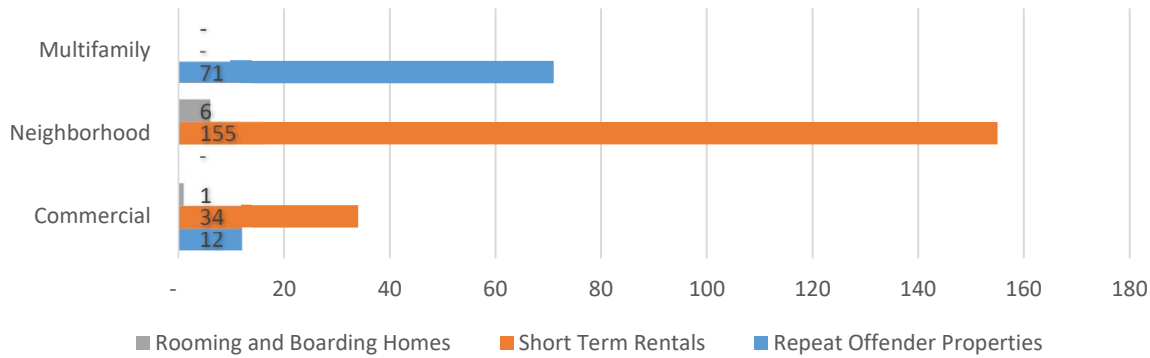
Complaint Cases by Zoning Designation



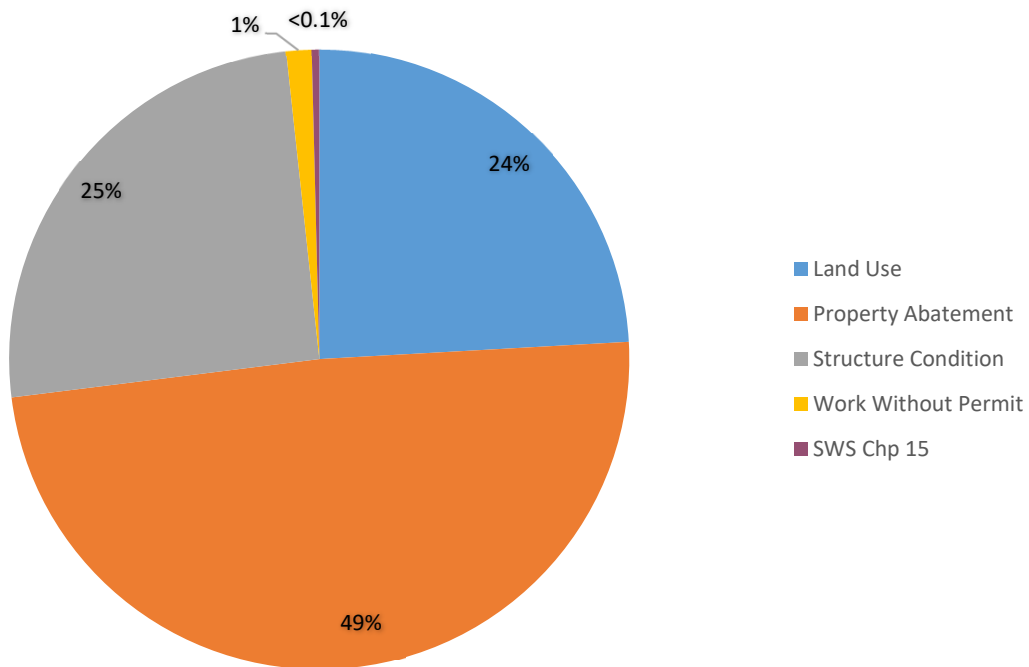
Complaint Cases by Operating License Types



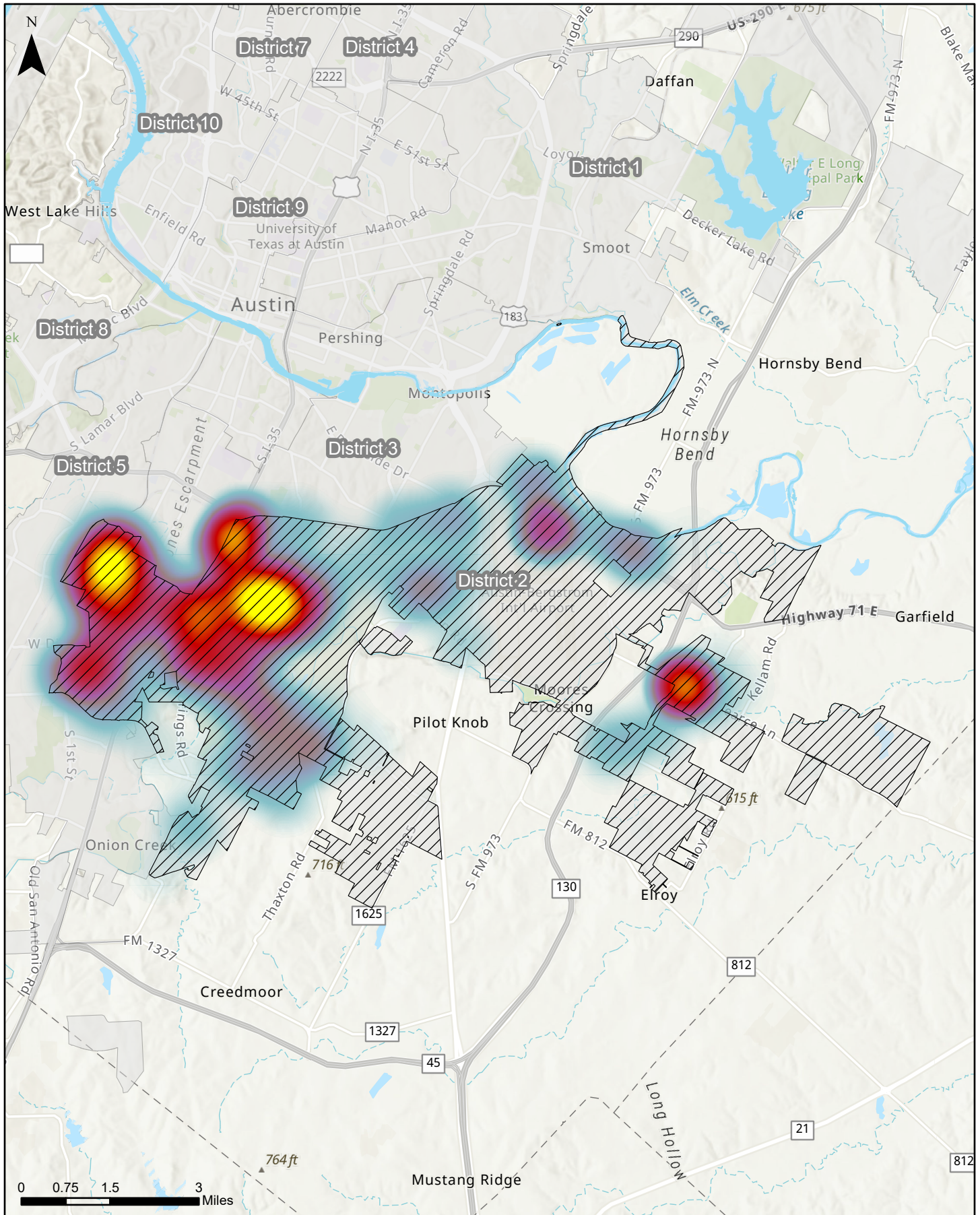
Operating License Complaint Cases by Zoning Designation



Operating License Complaint Case Types

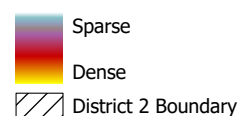


Council District 2



This map examines the density of code cases opened in District 2 between October 1, 2018 and September 30, 2019. The total number of cases opened was 3,106

Sources: AMANDA Case Management Database; GIS DM 2021



AUSTINCODE
DEPARTMENT

Map generated on:
11/12/2021